

G[®]-CUP Cupboard trolley made of anodised aluminium

The Gmöhling cupboard trolley can do it all and convinces with its high quality.

Perfectly designed down to the very last details - proven worldwide. Our anodised cupboard trolley also complies with the highest hygiene standards and impresses with its ease of handling and cleaning, durability, variability, ergonomic perfection and first-class quality.



1 Seal on doorframe and door

- new integrated EPDM seal
- (Nut and spring system are also ideal for automatic cleaning plants)
- silicone seal is available upon request (especially for high temperature in sterile working environments)



2 Wheels

- 2 fixed and 2 swivelling castors, SUPRATECH-wheels dia. 200 mm,
- thermoplastic rubber wheels, non-marking, precision ball bearing
- swivelling castors with brakes



3 Protective buffers

- blue top and bottom protective buffers as standard
- all-round, replaceable elastic buffer - protrudes by 45 mm to offer perfect transport protection
- top buffer prevents objects falling off the trolley



4 Door hinges

- full length door hinges
- maintenance-free and silent operation thanks to Teflon coated hinge pins



5 Swing doors

- excellent rigidity due to integrated profiles
- hinged through 270°, doors protected by the buffer when fully open and closed
- thickness of 3 mm gives strength



6 Twist lock

- user friendly
- centrally operated
- complete seal with door frame when locked
- lightweight, secure locking mechanism



7 Document frames

- DIN-A4 frame on the inside of one door
- DIN-A7 frame on one end of the trolley



8 Shelves

- removable shelves
- max. load 100 kg
- smooth and easy-to-clean



9 Shelf plugs

- polyamide shelf plugs



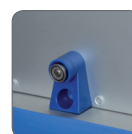
Chassis

- optimum torsional strength
- maximum stability thanks to the BiTubAl®-torsion frame
- (two tubular profiles integrated in the superstructure)
- wheel layout can be altered
- smooth running - even when towing in train



11 Push/Pull handles

- ergonomic
- combined sliding and pulling handle, anodised handles on both ends for pushing or pulling



12 Magnets

- at the end of this section it says, shelves' for no reason, otherwise it is fine

We bring movement to your logistics!

Designed to meet the highest standards of hygiene, with easy handling and cleaning, and a low total cost of ownership (TOC).

Our Gmohling Cupboard trolleys, with their practically engineered design, and quality materials will fulfill a variety of needs and purposes. The anodised Gmohling Cupboard Trolley is especially designed for operating logistics in many areas:

- linen transport
- sterile areas
- Showbusiness
- with ISO-module trays
- for towing, transport by AGV and trucks
- in-house logistics



OPTIONS

- A** cylinder lock incl. 2 keys
- B** clip to maintain doors open in washing installations
- C** spring-mounted, rigid tow bar pins with uncoupling lock
- D** fold down racks for linen transport, also with additional fold-down grid for dirty linen transport
- E** colored epoxy-coating for the use in sterile area
- F** roller shutters instead of doors
- G** versatile internal partitioning e.g. clothes rail, additional compartments, or ISO-basket system
- H** corner reinforcement

Further options on demand!

We bring movement to your logistics.



Certification: DIN EN ISO 9001:2015
Registration No.: 31210733/2

GMOHLING Transportgeräte GmbH

Stadelner Hauptstr. 34
90765 Fürth | Germany

Phone: +49 911 - 7669 - 0
Fax: +49 911 - 7669 - 277

www.gmoehling.com
sales@gmoehling.com

